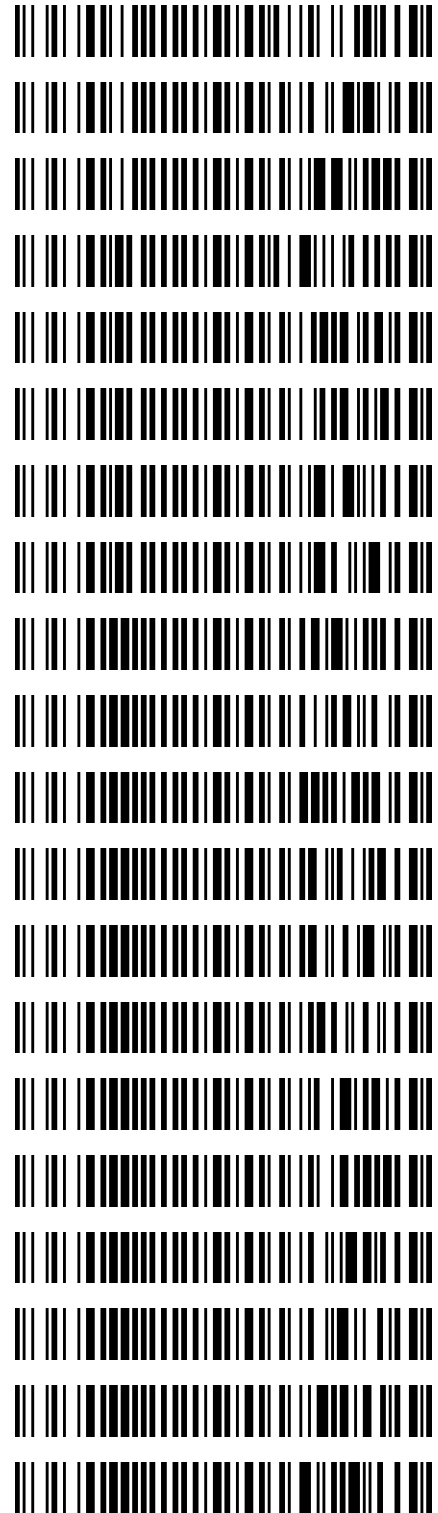


Worklist: 2141

Bylee

<u>LAB_CASE</u>	<u>ITEM</u>	<u>TASK_ID</u>	<u>DESCRIPTION</u>
C2017-2279	2	105712	AM 3 Urine Carboxy-THC
C2018-0002	4	105731	AM 3 Urine Carboxy-THC
C2018-0009	2	105714	AM 3 Urine Carboxy-THC
M2017-5369	5	105713	AM 3 Urine Carboxy-THC
M2017-5723	4	105715	AM 3 Urine Carboxy-THC
M2018-0039	1	105716	AM 3 Urine Carboxy-THC
M2018-0067	2	105717	AM 3 Urine Carboxy-THC
M2018-0068	2	105718	AM 3 Urine Carboxy-THC
P2017-2833	1	105719	AM 3 Urine Carboxy-THC
P2017-2940	1	105720	AM 3 Urine Carboxy-THC
P2017-2998	1	105721	AM 3 Urine Carboxy-THC
P2017-3031	1	105722	AM 3 Urine Carboxy-THC
P2017-3032	1	105723	AM 3 Urine Carboxy-THC
P2017-3092	1	105724	AM 3 Urine Carboxy-THC
P2018-0001	1	105725	AM 3 Urine Carboxy-THC
P2018-0037	1	105726	AM 3 Urine Carboxy-THC
P2018-0058	1	105727	AM 3 Urine Carboxy-THC
P2018-0059	1	105728	AM 3 Urine Carboxy-THC
P2018-0159	1	105730	AM 3 Urine Carboxy-THC
P2018-0215	1	105729	AM 3 Urine Carboxy-THC



Data Path : C:\My Files\cshrum\Desktop\Consolidated\Data\URINE\am 3 worklist 2141\
 Data File : THC-NC.D
 Acq On : 23 Jan 2018 16:20
 Operator : ISP\datastor
 Sample : Negative Control
 Misc : Lot # POC112116; AM #3 Worklist 2141
 ALS Vial : 76 Sample Multiplier: 1

Integration Parameters: events.e
 Integrator: ChemStation

Method : C:\gcms\1\methods\TOX.M
 Title :

Signal : EIC Ion 371.00 (370.70 to 371.70): THC-NC.D\data.ms

peak #	R.T. min	first scan	max scan	last scan	PK TY	peak height	corr. area	corr. % max.	% of total
1	5.659	190	200	216	VV	123	2506	34.88%	7.340%
2	5.804	234	250	260	BV	109	2522	35.10%	7.387%
3	5.996	308	317	345	VB	186	4740	65.96%	13.881%
4	6.294	400	420	433	VV	269	7186	100.00%	21.043%
5	6.366	433	445	459	VV	171	5432	75.59%	15.907%
6	6.435	459	469	480	VV	136	2707	37.68%	7.929%
7	6.500	480	492	504	VV	129	2414	33.59%	7.068%
8	6.674	534	552	588	BV	213	6639	92.40%	19.444%

Sum of corrected areas: 34146
 Signal : EIC Ion 473.00 (472.70 to 473.70): THC-NC.D\data.ms

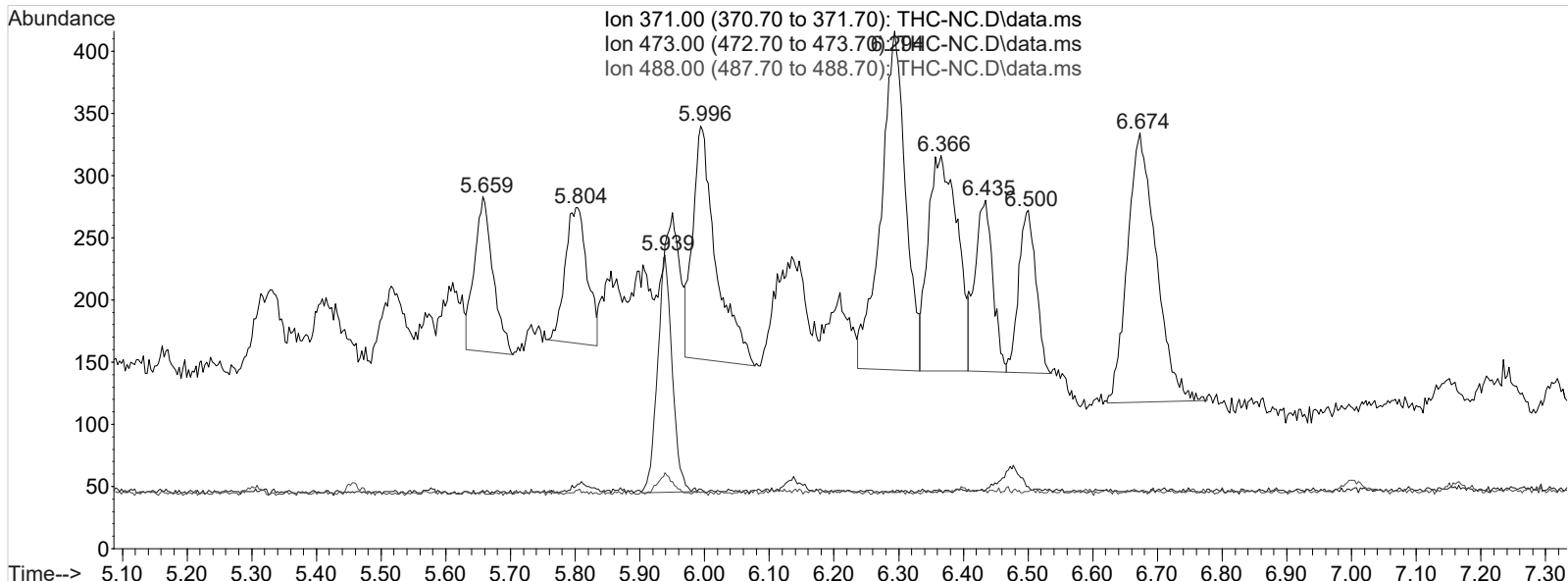
peak #	R.T. min	first scan	max scan	last scan	PK TY	peak height	corr. area	corr. % max.	% of total
1	5.939	284	297	314	BB	189	3048	100.00%	100.000%

Sum of corrected areas: 3048
 Signal : EIC Ion 488.00 (487.70 to 488.70): THC-NC.D\data.ms

peak #	R.T. min	first scan	max scan	last scan	PK TY	peak height	corr. area	corr. % max.	% of total
No peaks were detected using the method integration parameters!									

No peaks were detected using the method integration parameters!

TOX.M Thu Jan 25 12:29:08 2018



Data Path : C:\My Files\cshrum\Desktop\Consolidated\Data\URINE\am 3 worklist 2141\
Data File : THC-PC1.D
Acq On : 23 Jan 2018 16:30
Operator : ISP\datastor
Sample : Spiked Positive c-THC Control
Misc : c-THC lot # 0497429 in Negative Lot # POC112116; Worklist 2141
ALS Vial : 77 Sample Multiplier: 1

Integration Parameters: events.e
Integrator: ChemStation

Method : C:\gcms\1\methods\TOX.M
Title :

Signal : EIC Ion 371.00 (370.70 to 371.70): THC-PC1.D\data.ms

peak #	R.T. min	first scan	max scan	last scan	PK TY	peak height	corr. area	corr. % max.	% of total
1	5.374	90	101	126	VV	1918	29677	100.00%	44.586%
2	5.649	189	196	216	VV 2	126	2671	9.00%	4.013%
3	5.799	227	248	258	VV 2	148	4111	13.85%	6.176%
4	5.985	305	313	345	VV	209	5287	17.82%	7.943%
5	6.286	398	417	432	VV	289	8142	27.44%	12.233%
6	6.353	432	441	459	VV	198	6475	21.82%	9.728%
7	6.491	478	489	515	VB	150	3692	12.44%	5.547%
8	6.666	517	549	574	BV	205	6506	21.92%	9.774%

Sum of corrected areas: 66562
Signal : EIC Ion 473.00 (472.70 to 473.70): THC-PC1.D\data.ms

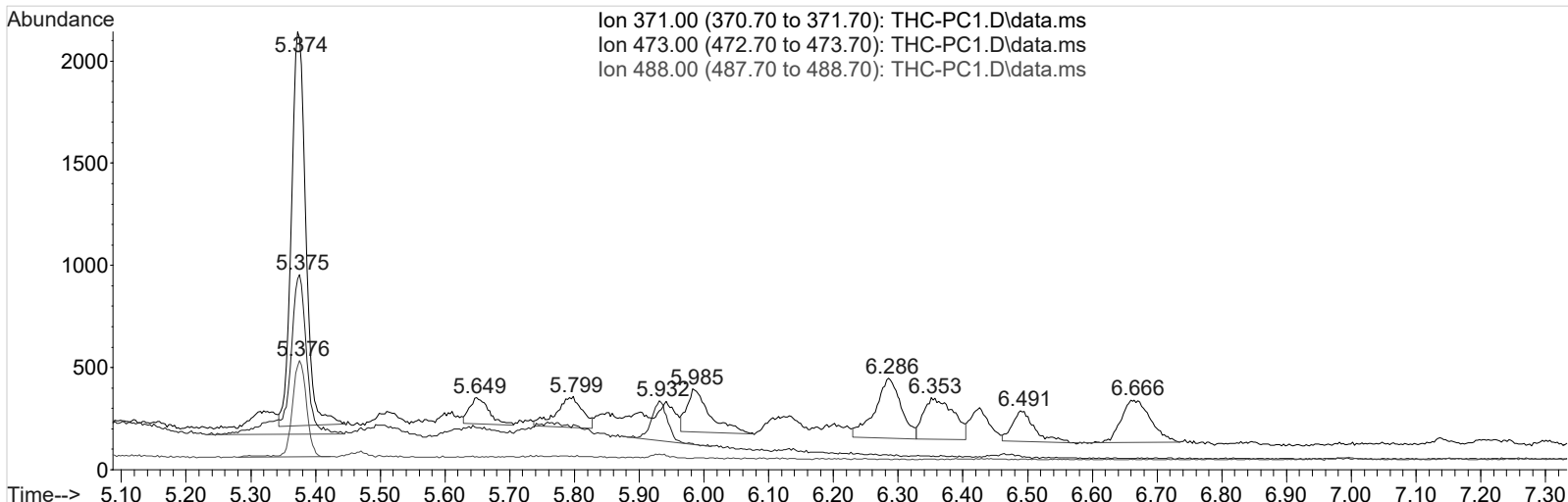
peak #	R.T. min	first scan	max scan	last scan	PK TY	peak height	corr. area	corr. % max.	% of total
1	5.375	52	101	125	BV	773	14366	100.00%	81.232%
2	5.932	274	295	322	BB 2	194	3319	23.10%	18.768%

Sum of corrected areas: 17685
Signal : EIC Ion 488.00 (487.70 to 488.70): THC-PC1.D\data.ms

peak #	R.T. min	first scan	max scan	last scan	PK TY	peak height	corr. area	corr. % max.	% of total
1	5.376	69	102	118	BB	465	7096	100.00%	100.000%

Sum of corrected areas: 7096

TOX.M Thu Jan 25 12:28:20 2018



Data Path : C:\My Files\cshrum\Desktop\Consolidated\Data\URINE\am 3 worklist 2141\
 Data File : THC-PC2.D
 Acq On : 24 Jan 2018 07:51
 Operator : ISP\datastor
 Sample : Spiked Positive c-THC Control
 Misc : c-THC lot # 0497429 in Negative Lot # POC112116; Worklist 2141
 ALS Vial : 77 Sample Multiplier: 1

Integration Parameters: events.e
 Integrator: ChemStation

Method : C:\gcms\1\methods\TOX.M
 Title :

Signal : EIC Ion 371.00 (370.70 to 371.70): THC-PC2.D\data.ms

peak #	R.T. min	first scan	max scan	last scan	PK TY	peak height	corr. area	corr. % max.	% of total
1	5.373	89	100	126	VV	2030	30286	100.00%	44.312%
2	5.652	188	197	215	VB	136	2850	9.41%	4.170%
3	5.794	217	246	258	BV	143	3726	12.30%	5.452%
4	5.988	306	314	339	VV	204	5104	16.85%	7.468%
5	6.286	393	418	431	BV	276	6643	21.93%	9.719%
6	6.358	431	443	457	VV	179	5654	18.67%	8.273%
7	6.422	457	465	476	VV	156	2945	9.72%	4.308%
8	6.487	476	487	515	VB 2	154	3612	11.93%	5.285%
9	6.664	523	549	575	BV	238	7526	24.85%	11.012%

Sum of corrected areas: 68347

Signal : EIC Ion 473.00 (472.70 to 473.70): THC-PC2.D\data.ms

peak #	R.T. min	first scan	max scan	last scan	PK TY	peak height	corr. area	corr. % max.	% of total
1	5.375	89	101	119	BB	752	10804	100.00%	73.914%
2	5.928	261	293	309	BB 2	220	3813	35.29%	26.086%

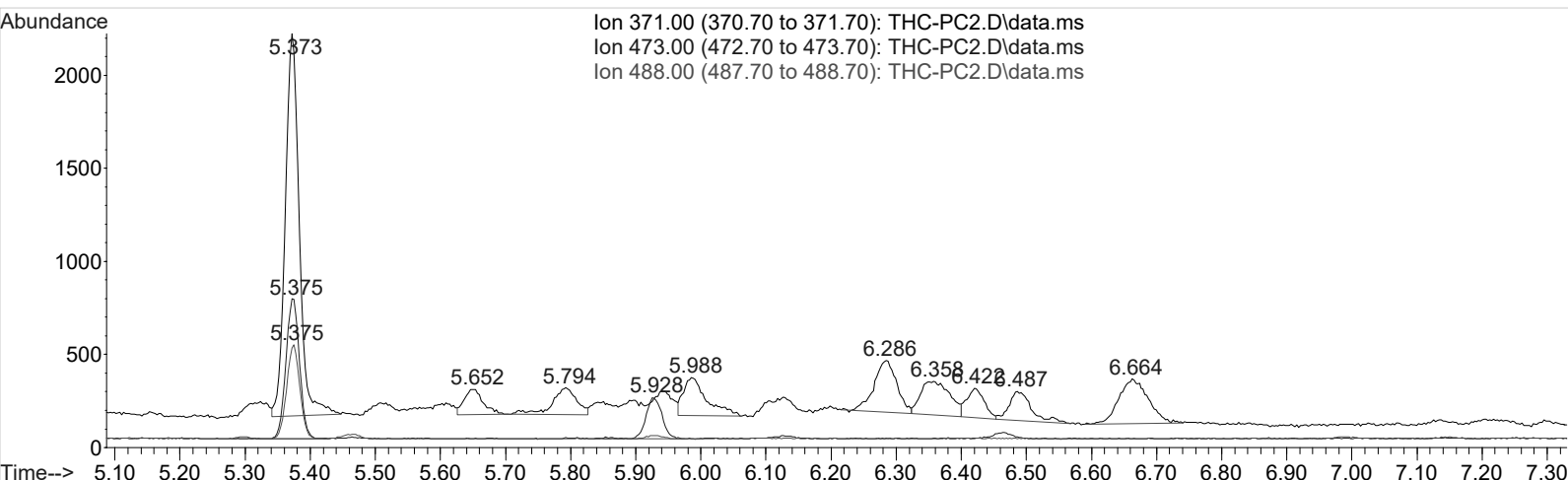
Sum of corrected areas: 14617

Signal : EIC Ion 488.00 (487.70 to 488.70): THC-PC2.D\data.ms

peak #	R.T. min	first scan	max scan	last scan	PK TY	peak height	corr. area	corr. % max.	% of total
1	5.375	69	101	118	BB	498	7092	100.00%	100.000%

Sum of corrected areas: 7092

TOX.M Thu Jan 25 12:28:49 2018



Data Path : C:\My Files\cshrum\Desktop\Consolidated\Data\URINE\am 3 worklist 2141\
Data File : THC-C3.D
Acq On : 23 Jan 2018 16:53
Operator : ISP\datastor
Sample : Biorad C3 Control
Misc : C3 Lot # 68440; Worklist 2141
ALS Vial : 78 Sample Multiplier: 1

Integration Parameters: events.e
Integrator: ChemStation

Method : C:\gcms\1\methods\TOX.M
Title :

Signal : EIC Ion 371.00 (370.70 to 371.70): THC-C3.D\data.ms

peak #	R.T. min	first scan	max scan	last scan	PK TY	peak height	corr. area	corr. % max.	% of total
1	5.376	90	101	123	VB 2	452	7116	100.00%	52.683%
2	6.287	374	418	432	PV	127	3183	44.73%	23.563%
3	6.662	519	548	578	BB	105	3209	45.09%	23.754%

Sum of corrected areas: 13508
Signal : EIC Ion 473.00 (472.70 to 473.70): THC-C3.D\data.ms

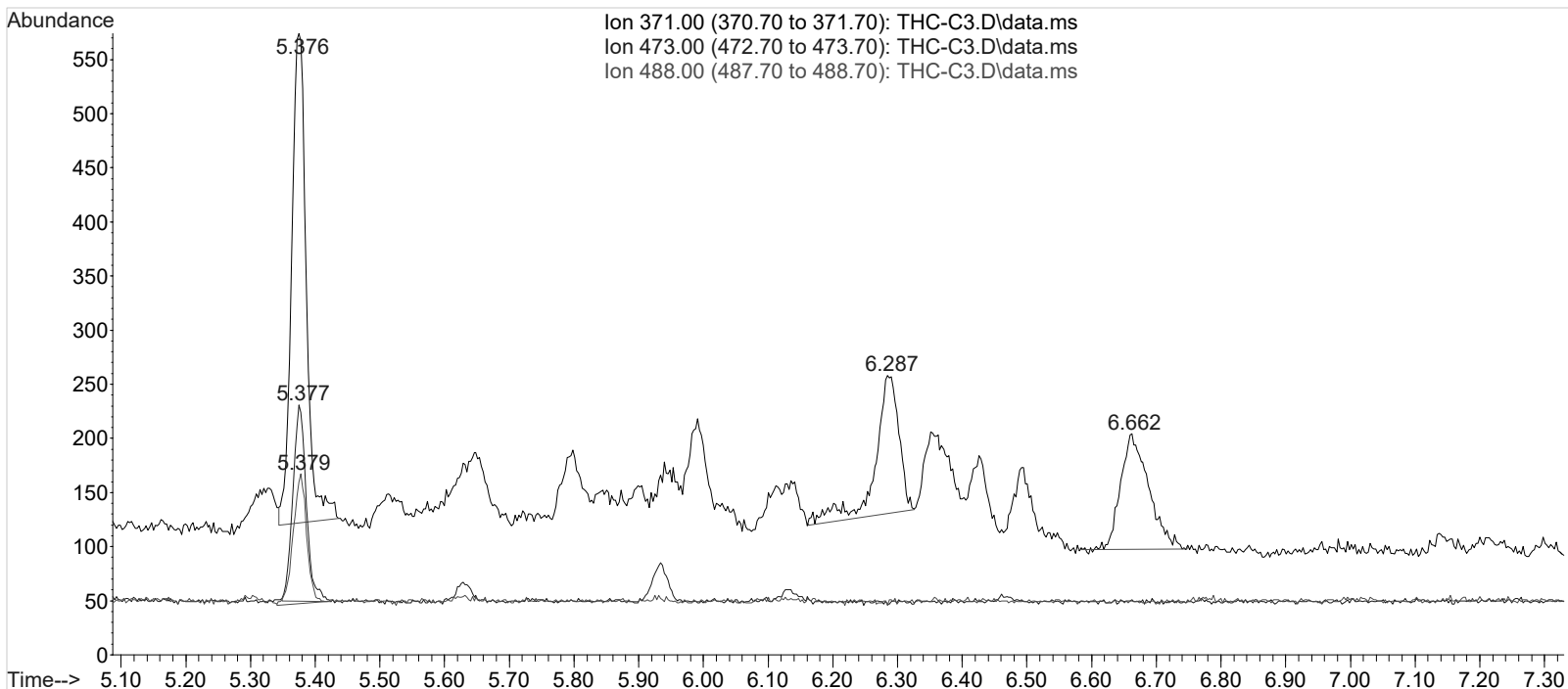
peak #	R.T. min	first scan	max scan	last scan	PK TY	peak height	corr. area	corr. % max.	% of total
1	5.377	92	102	119	BB 2	179	2570	100.00%	100.000%

Sum of corrected areas: 2570
Signal : EIC Ion 488.00 (487.70 to 488.70): THC-C3.D\data.ms

peak #	R.T. min	first scan	max scan	last scan	PK TY	peak height	corr. area	corr. % max.	% of total
1	5.379	89	102	115	BB 2	117	1691	100.00%	100.000%

Sum of corrected areas: 1691

TOX.M Thu Jan 25 12:29:20 2018



AM #3 Urine Carboxy-THC QC Calculations

Run Date: 1/23/2018

Case Calculations:
Lab Case #: BRC3 Lot 68440

<i>EIC Ion 371 Corr. Area:</i>	7116	
<i>EIC Ion 473 Corr. Area:</i>	2570	473:371 Ratio: 0.361
<i>EIC Ion 488 Corr. Area:</i>	1691	488:371 Ratio: 0.238

Quality Control Calculations:

Retention Time acceptable range: 5.274 to 5.473

	<i>1st ctrl</i>	<i>2nd ctrl</i>
<i>EIC Ion 371 Corr. Area:</i>	29677	30286
<i>EIC Ion 473 Corr. Area:</i>	14366	10804
<i>EIC Ion 488 Corr. Area:</i>	7096	7092

Approximate minimum corrected area of 371 ion: ~ 5935

<i>Ratio of 473:371</i>				
<i>1st ctrl</i>	0.484	<i>2nd ctrl</i>	0.357	<i>avg.</i> 0.420
<i>Accepted Range (+/- 20%)</i> 0.336 - 0.504				

<i>Ratio of 488:371</i>				
<i>1st ctrl</i>	0.239	<i>2nd ctrl</i>	0.234	<i>avg</i> 0.237
<i>Accepted Range (+/- 20%)</i> 0.189 - 0.284				

Carboxy-calculation sheet
Revision 0 effective date 10/23/13
Issuing authority: Quality Manager